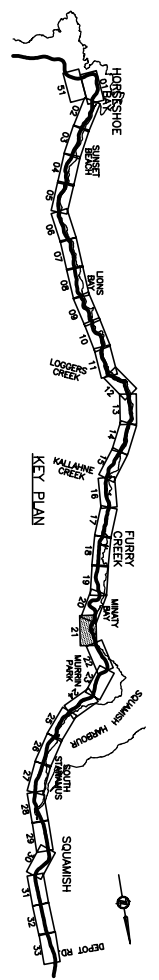
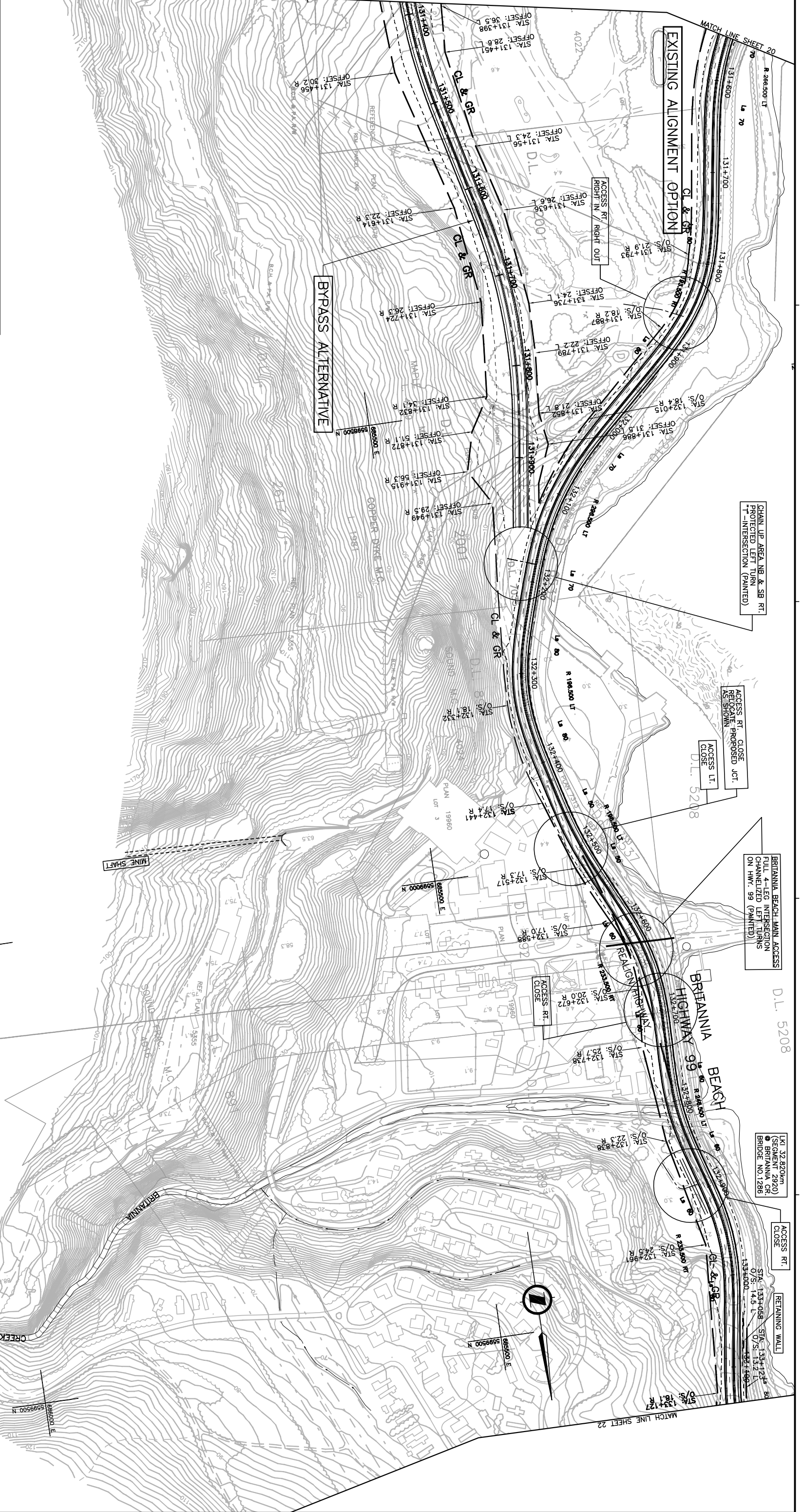


NOTES:
 LAINING CONFIGURATION SHOWS (2 + 1) WITH ALTERNATING PASSING OPPORTUNITIES, AND MAY BE SUBJECT TO CHANGE DURING MORE ADVANCED DESIGN STAGE.
 THE CLEARING AND GRUBBING LIMITS ARE GENERALLY SET AT 3-10m BEYOND THE TOE OF FILL OR TOP OF CUT LINE. THE LIMITS ARE ONLY AN APPROXIMATION.
 WITH SOIL INVESTIGATIONS AND MORE ACCURATE GROUND SURVEY INFORMATION, THE CUT AND FILL SLOPE ANGLES WILL BE FURTHER DEFINED AND CLEARING LIMITS MAY INCREASE OR DECREASE DURING MORE ADVANCED DESIGN STAGES.
 THE COORDINATES FOR THE SEA-TO-SKY HIGHWAY IN ZONE 'A' ARE BASED ON A LOCAL GROUND SYSTEM ON AN ELEVATION DATUM OF 70m. THE SYSTEM IS CALLED THE 'SIS 2002 PROJECT GRID COORDINATE SYSTEM'.
 TO CONVERT FROM UTM NAD 83 TO THE SIS 2002 PROJECT GRID COORDINATE SYSTEM IN ZONE 'A', MULTIPLY THE UTM NAD 83 COORDINATE BY THE COMBINED SCALE FACTOR 1.000408116 THEN ADD 100,000m N AND 200,000m E.
 ELEVATIONS ARE GEODETIC MEAN SEA LEVEL, BASED ON FEDERAL / PROVINCIAL BENCHMARKS.
 THE ENGINEERING INFORMATION FOUND ON THE PRELIMINARY ALIGNMENT DRAWINGS SUPERSEDES THE ENGINEERING INFORMATION FOUND ON THE ENVIRONMENTAL MAPPING.

LEGEND
 - - - - - PRELIMINARY CLEARING AND GRUBBING LIMITS
 - - - - - PRELIMINARY TOE OF FILL OR TOP OF CUT
 - - - - - HIGHWAY DETOUR ALONG BC RAIL



PRELIMINARY FOR INFORMATION ONLY
 2003-06-20



<p>SNC-LAVALLIN 1800 - 1075 West George Street Canada V6E 3G9</p>		<p>ASSOCIATED ENGINEERING</p>	
IN ASSOCIATION WITH <p>R.F. Binette & Associates Ltd. 5555 BRIDGEWAY VANCOUVER, BC V6P 1G6</p>		DESIGNED: K. TORONIKS/R. WONG DATE: 02-10-10 CHECKED: X. SUGRANA DATE: 02-10-15 APPROVED: A. WACHMANN DATE: 02-11-08	
Rev	Date	Description	Signature
PA	02-11-15	ISSUED FOR ENVIRONMENTAL PERMITTING	
PH	02-12-20	REVISED BYPASS ALTERNATIVE	
PC	03-08-20	GENERAL REVISION	

<p>MINISTRY OF TRANSPORTATION SEA-TO-SKY CORRIDOR IMPROVEMENTS HORSESHOE BAY - WHISTLER</p>		<p>PRELIMINARY ALIGNMENT PRELIMINARY CLEARING LIMITS</p>	
HIGHWAY 99 - HORSESHOE BAY TO SQUAMISH STA. 131+600 TO STA. 133+200		SENIOR DESIGN ENGINEER DATE	
FILE No.	PROJECT No.	REV.	DRAWING No.
016315-EN01-S	09901-7005	1	41DK-PAHS-0421