

## Team Two – The History Team

Tobi Fenton, Amber Paul, David Tracy, Leila Zeppelin, Hanako Amaya

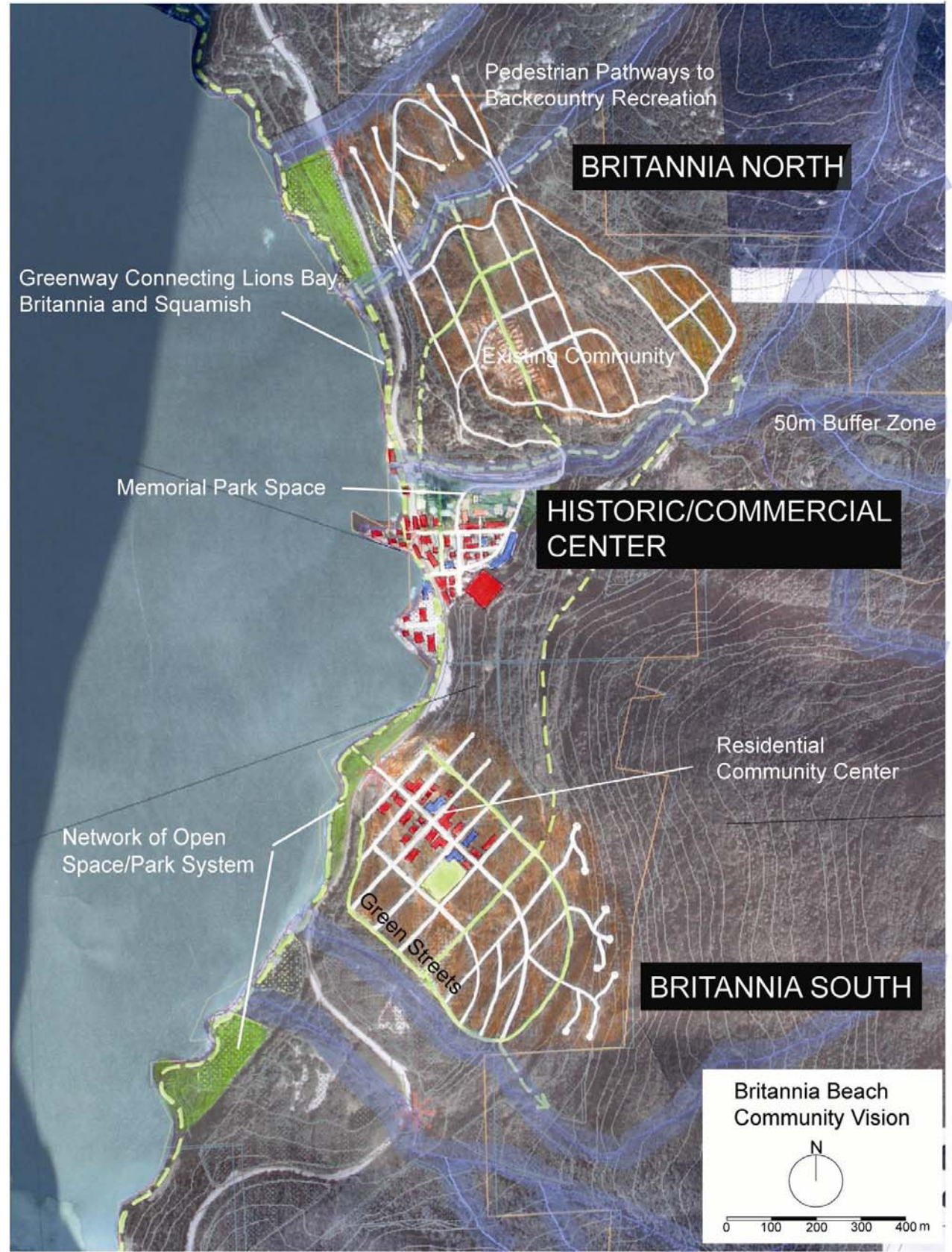
# RECONSTRUCTING COMMUNITY

Britannia Beach Center is the historic heart of Britannia Beach. History, research, education, recreation, and commerce create a focus for residents and visitors. A new highway crossing connects the town center with the waterfront, where a transportation hub features transport by train, ferry, and bicycle.





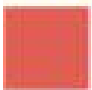

Britannia North is a new community that takes its shape from the pattern of the historic town, with streets that gently wind up the hill from Britannia Center. Eight hundred new homes nestle onto the slope and look down to the historic town center. Essential services and an elementary school are within walking distance of residents.

The new community of Britannia South introduces twelve hundred new homes in a grid pattern oriented to Howe Sound, giving views and access to the waterfront. "Green" streets, with paved tire tracks and grassy center strips, alternate with "gray" streets, the main vehicular access through the neighbourhood. Britannia South is served by a commercial center with basic shopping, and an elementary school.

Britannia North and South are connected by a greenway, which gives a safe pedestrian and bicycle route between the communities along the waterfront. The greenway can also extend north to Squamish and south to Furry Creek.



### LEGEND

	RESIDENTIAL		PUBLIC INSTITUTION
	PARK		PED/CYCLE PATH
	COMMERCIAL		GREEN STREET